

Muslim Association of Newfoundland and Labrador (MANAL)

History:

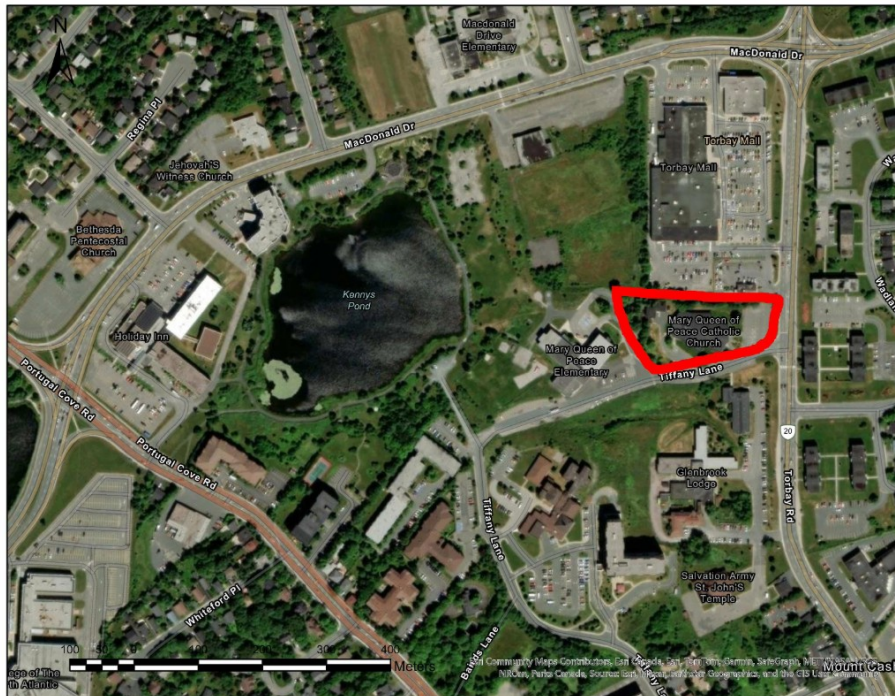
The Muslim Association of Newfoundland and Labrador (MANAL) was formed in 1982. The association successfully opened Newfoundland's first and only mosque, Masjid an-Noor in 1990 at St. John's, Newfoundland.

The Muslim community of St. John's has experienced an exponential growth in its population. Its population has increased from a few hundred in the early 2000s to about eight thousand in 2024 and the growth is likely to continue. The majority of new Muslims are from war-affected parts of the Muslim world with limited financial ability to contribute towards the current New Mosque project. This is the reason that we are reaching out to our Muslim Brothers and Sisters in various parts of North America and Europe. MANAL is a registered charity with the Government of Canada and donors are eligible for a tax-deductible donation receipt.

New Masjid:

The Muslim Association of Newfoundland and Labrador has acquired a new facility for a new mosque. It previously served as the iconic Mary Queen of Peace Church at 135 Torbay Road and is situated on a large property of 2.5 acres. It is accessible through public transportation and is also at the center of a well-known residential and commercial hub. The total built-in area of this property is roughly 22,000 square feet. It can accommodate a large congregation and is highly suitable to cater to the spiritual needs of the growing Muslim population in the St. John's area.





Fundraising Goal:

The goal is to renovate this church and to convert it into a full-fledged Mosque and Islamic Centre. The activities will include:

- Host large congregational prayers
- Islamic school activities
- Boys and Girls Youth Clubs
- A Washing Facility
- And other MANAL activities

Our fundraising goal is to raise **\$1 million**, and our objective is to inaugurate this new House of Allah by the upcoming Ramadan (March 2025) Insha'Allah

Donation Methods:

All donations are tax-deductible. All donations or Qarde Hasana can be made by:

- Issuing a cheque to the Muslim Association of Newfoundland and Labrador
- Visiting MANAL's online donation link at www.manal.ca/donate
- Dropping off your contributions at the donation boxes located at Masjid Al Noor
- Wire transfer